



NACE

Coaching for Empowerment

ON-SITE WORKSHOP

NATIONAL ASSOCIATION OF
COLLEGES AND EMPLOYERS
www.nacweb.org



COURSE ONE

On-Campus Training

Overview

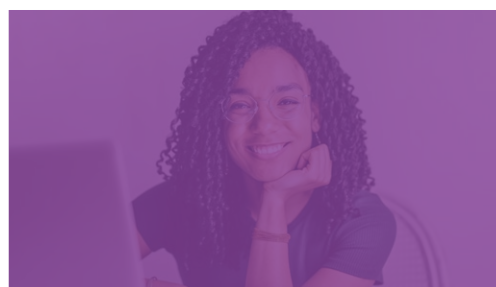
Participants will examine appropriate reinforcement techniques throughout the helping process, and gain understanding of a nonjudgmental approach in the coaching process, modeling acceptance, facilitating openness, and demonstrating self-awareness.

Course Content Areas

- Understanding empowerment
- The coaching process, the impact of questions, and listening skills; and
- The role of being open to others and unconscious bias in the coaching process.

Learning Objectives

- Discuss and understand the dimensions of empowerment: power, decision making, information, autonomy, initiative, creativity, knowledge, skills and responsibility
 - Learning the process of supporting a client to develop a strong sense of self-belief, confidence, and agency, enabling them to take control of their own life, make decisions, and achieve their goals by identifying their strengths and overcoming limiting beliefs, essentially giving them the power to create positive change within themselves.
- Examine the definition of unconscious bias and strategies to be aware of one's own unconscious bias;
- Study the role of the coaching process, fundamentals of building rapport with the coachee, how to acutely listen and be present in the moment to hear what the coachee is saying, yet also observe nonverbal communication of the coachee;
- Identify the qualities and skills of an empowering coach, and the safe practices that are developed in the coaching relationship; and
- Determine how flexible and adaptable the approach to coaching is, and the communication involved and carried out.



Format: Live Workshop

Length: 7 hours

Career Level:

Basic-, intermediate-, and advanced-level career services professionals

Career Services Competency:

Career Coaching, Advising, and Counseling

Fee: \$500 (member);
\$625 (nonmember)

Continuing Education Clock Hours

- BCC - 7 clock hour per session
- ICF - 12 clock hour per session

MODULE

NACE: Coaching for Empowerment

Length:

7 hours; 1 day of instruction, discussion, and exercises provided.

(Note: 7 hours apply to earning the BCC credential)

Suggested schedule: 8:30 a.m. – 4 p.m.

Instructor: Basic-, intermediate-, and advanced-level career services professionals

Career Level:

Coaching for the Empowerment is designed for career services professionals at all career levels.

Career Services Competency:

Coaching for the Empowerment addresses the Career Coaching and Advising and Counseling competencies for career services professionals

Continuing Education Clock Hours

- BCC – 7 clock hour per session
- ICF – 12 clock hour per session



Fees

MODULE NAME	REGISTRANTS	VIRTUAL	ON-SITE
Coaching for Empowerment	Level 1 (up to 10 people)	\$2,300	\$5,100
	Level 2 (over 10 people)	\$2,300 + \$230 per person	\$5,100 + \$510 per person

**Pricing effective February 2023.*

Fees Include:

- NACE Coaching Faculty
- NACE Support Staff
- Learning Guide
- Handouts/Resources

Fees Exclude:

- Location or Facilities (space for all attendees, break out space for small, 4-6 person groups)
- Audiovisual needs (laptop, remote microphone, projector)
- Food and beverage
- Incidentals (flip charts, markers)

Please note: Your on-site program may not be recorded or reproduced in any way.



NACE is an approved provider by the Center for Credentialing and Education, Inc. for the Board Certified Coach Credentialing and Continuing Coach.



NACE is also an approved provider for Continuing Coach Education clock hours through the International Coaching Federation.

QUESTIONS?

Contact NACE Professional Development at educationrequest@nacweb.org, 610.625.1026



1 E Broad Street | Ste 130 - 1005 | Bethlehem | PA 18018-5934 | nacweb.org

©2025 National Association of Colleges and Employers. All rights reserved. | Updated February 2025